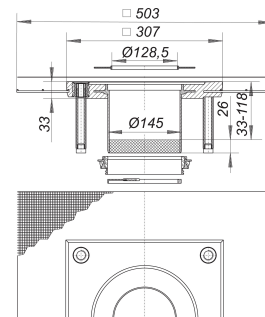
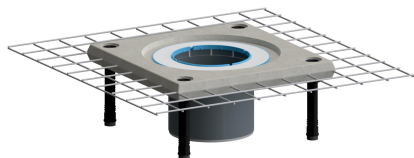


## Collar CeraDrain S 15

Part number: 563002  
 GTIN: 4001636563002  
 Rebate group: 5



### Description:

Collar CeraDrain S 15  
 used with polypropylene floor drain bodies  
 54/55, 57/58, 61 and 61/1

#### specification

- polymer concrete collar with steel mesh reinforcement
- height adjustable levelling legs
- ABS raising piece
- laterally adjustable upper collar
- glassfibre mat reinforcement
- seal\*
- spacer
- temporary blanking plate

\* Please note: in cases where a secondary membrane is used and a DallBit drain was installed, then an S 15 seal (Art. Nr. 590022) must be used instead of the CeraDrain seal.

Gratings for CeraDrain S 15/TistoDrain S 15 with lateral adjustment:

+/- 13 mm (type VR 15 and V, S 15/d: 155 +/- 5 mm),

height adjustable 40 mm

### Spare parts:

693006 Back flow seal CeraDrain S 15

693143 Glassfibre mat S 15, reinforced, 500 x

693099 Upper collar CeraDrain/TistoDrain S 15