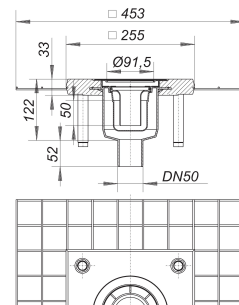
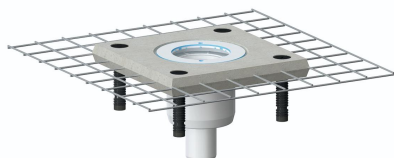


Floor drain body CeraDrain 49, DN 50

Part number: 513212
 GTIN: 4001636513212
 Rebate group: 5



Description:

Floor drain body CeraDrain 49, DN 50
 conforming to DIN EN 1253
 outlet DN 50 vertical

specification

- polymer concrete collar with steel mesh reinforcement
- height adjustable levelling legs
- laterally adjustable upper collar
- glassfibre mat reinforcement
- removable trap insert, 50 mm water seal (conforming to DIN EN 1253)
- temporary blanking plate

material

polypropylene

Used with gratings and frames for CeraDrain S 10/TistoDrain S 10.

Flow rates tested to DIN EN 1253:

Nominal diameter	Product standard	Min. flow rate according to norm	Water level according to norm
DN 50	DIN EN 1253	0.80 l/s	20.00 mm

Spare parts:

495082 Upper collar CeraDrain/TistoDrain S 10

595102 Glassfibre mat S 10, reinforced, 500 x