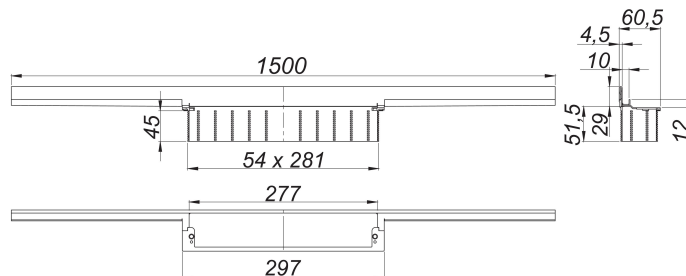
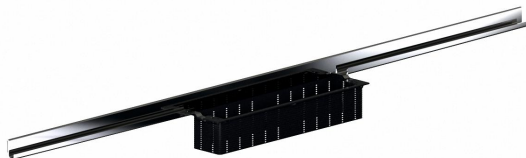


shower channel CeraWall Individual, 1500 mm

Part number: 536532

GTIN: 4001636536532

Rebate group: 11



Description:

shower channel CeraWall Individual, 1500 mm

for installation with drain body DallFlex, DallFlex Plan, DallFlex vertical and shower underlay DallFlex Wall, DallFlex Wall Plan.

Concealed channel with integrated fall, for installation at the junction of wall and floor. Suitable for floor and wall finish of 12 – 24 mm (including adhesive), length can be adjusted by one millimeter.

specification

- self-adhesive security tape S 3 with cut-resistant stainless steel mesh and sound insulation
- accessories for installation and positioning
- scriber template
- construction and sealing adhesive
- temporary blanking plate

material

304 stainless steel

Ordering CeraWall Individual:

Please order drain body DallFlex or shower underlay DallFlex Wall + shower channel CeraWall Individual + cover plate as three components.

Spare parts:

535559

535788

535580