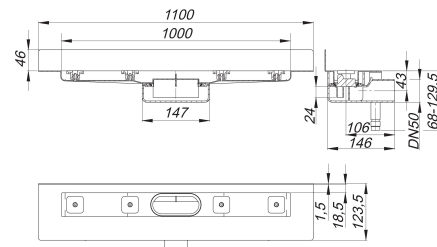
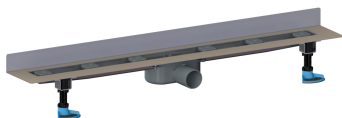


shower channel CeraLine Nano W 1000 mm, DN 50

Part number: 523297
 GTIN: 4001636523297
 Rebate group: 8



Description:

shower channel CeraLine Nano W 1000 mm, DN 50
 Linear drainage for installation at wall
 with one drain body, outlet DN 50 horizontal

specification

- sound absorbing height adjustable levelling legs
- integral sand coated flange for secure bonding of under-tile waterproofing
- removable trap insert, 24 mm water seal (deviating to DIN EN 1253)
- height adjustable screws
- temporary blanking plate
- tiling gauges
- edge trim jigs

material

channel 304 stainless steel, trap polypropylene

Can be connected to British standard pipework with adaptor part No. 880727.

Flow rates tested to DIN EN 1253:

Nominal diameter	Product standard	Min. flow rate according to norm	Water level according to norm
DN 50	DIN EN 1253	0.80 l/s	20.00 mm

Spare parts:

523983 adjustable pedestals