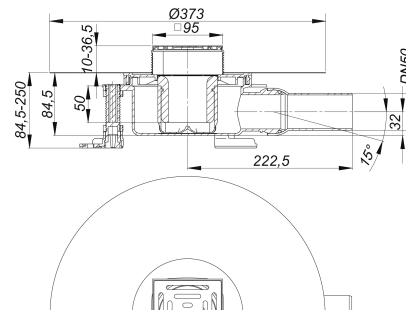
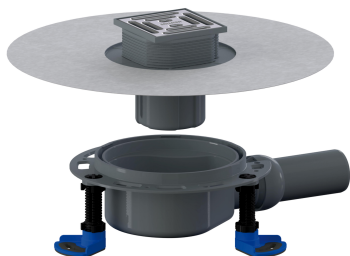


floor drain DallDrain Pure, DN 50, 100 x 100 mm

Part number: 517005
 GTIN: 4001636517005
 Rebate group: 6



Description:

floor drain DallDrain Pure, DN 50, 100 x 100 mm
 conforming to DIN EN 1253

Floor drain including grating DallDrain Pure with stainless steel grate in plastic frame. Side outlet DN 50, with ball joint, adjustable from 0 – 15 degrees.

Specification

- Stainless steel grate, plastic frame
- Integrated screed anchoring
- Flexible, click-in sealing sleeve for secure connection to bonded and sheet waterproofing conforming to DIN 18534
- Fully removable, two-piece trap insert and rodding eye, 50 mm water seal (conforming to DIN EN 1253)
- Temporary blanking plate
- Three sound-insulated mounting feet for fixing and height adjustment 85 – 250 mm
- Spigot can be shortened for floorings 10 – 36 mm (including adhesive)

Material

Polypropylene drain body and outlet, highly impact-resistant;
 1.4301 stainless steel grate, load class K 3 (300 kg); spigot and frame in ABS
 Pre-assembled set consisting of parts no. 517258 + 517210 + 517340.

Grating with positioning aid laterally adjustable +/- 2.5 mm.

Can be used with sound insulation mat DallDrain (part no. 517326) and

mounting aid DallDrain (part no. 517319).

Can be connected to British standard pipework with adaptor part No. 880727.

Flow rates tested to DIN EN 1253:

Nominal diameter	Product standard	Min. flow rate according to norm	Water level according to norm	Flow rate at water level 10 mm	Flow rate at water level 20 mm	Drainage capacity
DN 50	DIN EN 1253	0.80 l/s	20.00 mm	0.65 l/s	0.92 l/s	0.92 l/s

30.04.2024 20:15

DALLMER

Spare parts:

517159 floor drain DallDrain Select vertical,

517258 grating DallDrain Pure, 100 x 100 mm

517340 mounting feet DallDrain

517357 trap insert DallDrain

517197 sealing sleeve DallDrain