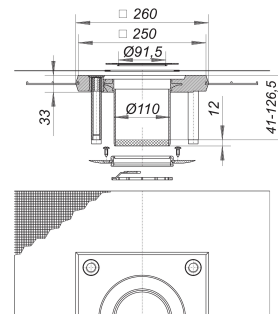
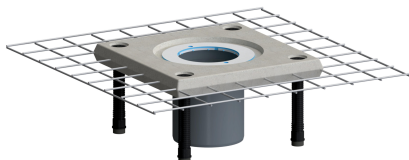


collar CeraDrain S 10

Part number: 513069

GTIN: 4001636513069

Rebate group: 5



Description:

collar CeraDrain S 10

used with floor drain bodies 40, 42 and 46, balcony drain types 83 and 84

specification

- polymer concrete collar with steel mesh reinforcement
- height adjustable levelling legs
- ABS raising piece
- laterally adjustable upper collar
- glassfibre mat reinforcement
- seal*
- spacer
- temporary blanking plate

* Please note: in cases where a secondary membrane is used and a DallBit drain was installed, then an S 10 seal (Art. Nr. 495020) must be used instead of the CeraDrain seal.

Gratings for CeraDrain S 10/TistoDrain S 10 are continuously adjustable.

lateral adjustment: +/- 5,5 mm

height adjustable: up to 40 mm

Spare parts:

495075 Two-way seal CeraDrain type S 10

595102 Glassfibre mat S 10, reinforced, 500 x

495082 Upper collar CeraDrain/TistoDrain S 10